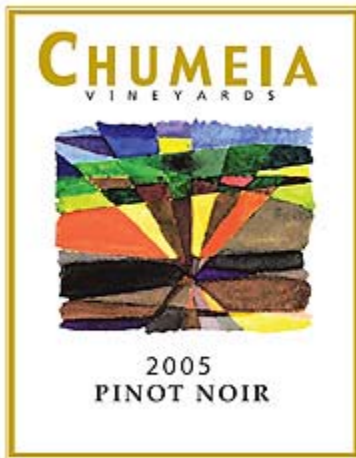




ARCHITECTURE

# MW Architecture, Inc

## Winery Resume



## Dry Canyon – Chumeia Vineyards – Paso Robles

Phased development of 21 acres off Highway 46. A processing building with outdoor crush and barrel wash was constructed first to allow for immediate wine production. Phase II focuses on tasting and hospitality functions and will add a tasting room, patio areas, a stage and guest parking, with completion slated for Spring 2004. The final phase proposes an extensive cave system for barrel storage. Production currently is 50,000 cases per year



## **Clautiere Vineyard - Paso Robles / Penman Springs Road**

Conversion of an existing residence, barn and storage buildings into a unique winery and tasting facility for an artist winemaker. Just completed in May 2003, this project promises to utilize extreme creativity to distinguish itself as an original. When completed this winery/tasting facility will produce 10,000 cases per year. The client depicts this inspiration as “the Mad Hatter meets Edward Scissorhands”.

### **Finished Interiors**



## Tolosa Tasting - San Luis Obispo

New 1500 sf. State of the art tasting facility addition to existing winery and conference facility. The owners spared no expense on showcasing their produce with innovative use of materials and lighting. Professional photography by Kasperovich.



## **Tolosa Conference Facility - San Luis Obispo**

New 6,500 administrative and conference facility addition to existing winery that we did a number of year prior. Completed May 2004



## San Miguel Winery – San Miguel



With an ultimate build-out of 450,000 sf, this seven phase project is scheduled to be developed over a period of up to 10 years. Structures on the property will eventually include a winery, storage facilities, tasting room, offices, caretakers residence, and a single family residence. Temporary events are also planned for up to 60 people. The winery will perform all stages of wine production and involve phased expansion. Phase III is currently under construction, which includes a 50,000 sf tank storage, 100,000 s.f. wash/barrel facility, 21,000 s.f. for casegoods, bottling and shipping, and 20,000 s.f. of office - Completed in August 2001. Production currently is 3 million cases per year. Currently in Phase IV - 65,000 sf Tank Storage addition estimated completion date September 2005.

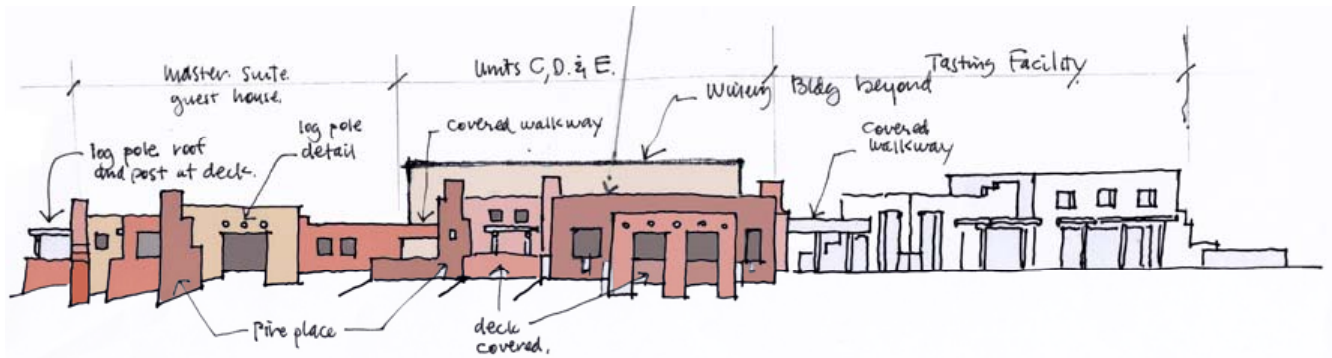


View from front gate



## Coyote Creek Winery – Paso Robles

This winery and tasting facility incorporates a southwestern theme with a bed and breakfast component. The winery serves to produce wine from the 40 acres of vines planted and the tasting facility will provide opportunities for small events and wine tasting with a bed and breakfast for the 5 suites that are on site. The tasting facility and winery was completed in 2003 and the bed and breakfast is currently under construction and will be completed by August 2005.



## Jensen Vineyards – Templeton

New 5000 case boutique winery and tasting facility located west of Templeton. This facility will include a small production facility case goods, barrel storage, tasting facility and guest residence above the tasting.





## Lucas and Lewellen Vineyards - Los Alamos

A proposed 150,000 case facility designed to fit the local early American farm vernacular. The production facility is proposed to be 40,000 square feet to produce the 26 varietals currently farmed on adjacent vineyards. Adjacent to the Winery is the 7000 sf ranch style tasting room and conference center with 4000 sf vineyard sales and administrative facility. The Tasting room operation facilitates more public events and private tasting. A one acre garden adjacent to the tasting provides an area for visitors to relax and enjoy the operations of the wine making process. This project is currently before the County of Santa Barbara Planning Commission



## Robak Winery – Templeton

This winery is currently in schematic design phase. The program requirements are to develop a winery for lease. The goal is to lease this facility to several winemakers and contract with local vineyards for grapes. The initial design will take advantage of the sloping site, where the grape delivery will be delivered at the top of the hill and the production will gravity flow through the winery. Phase one will entail 5,000 square foot winery with a 2,000 square foot tasting room facility to accommodate private tasting and showcase the local winemakers wine. Phase two will expand the winery with case good and barrel storage. Additional parking will be provided below for special events and possible tasting room expansion. This project production capability will be 50,000 to 100,000 cases per year.



## Talley Vineyard - Arroyo Grande

Current development includes an 80' x 160' barrel and casegood processing building, as well as a 3,600 sf. Tasting room/retail area and related facilities. The winery expansion was completed in the summer of 2000 and the tasting room was completed in the summer of 2002.



## Stolo Family Vineyard - Cambria

One of the earliest wineries in the area, this existing facility is in the process of expanding their operations. Current development includes an 80' x 160' barrel and case good processing building, as well as a 3,600 sf. Tasting room/retail area and related facilities. The winery expansion was completed in the summer of 2000 and the tasting room was completed in the summer of 2002.



## **Bowker Vineyards – Templeton**

New 5000 case boutique winery and tasting facility located west of Templeton. This facility will include a small production facility case goods, barrel storage, and tasting facility. Currently this project is in the entitlement phase and estimated completion date is March 2009.

